



2020 Community Impact

WHATCOM  
FAMILY YMCA



# FOR THE HEALTH OF OUR COMMUNITY

Due to the COVID-19 pandemic, the Whatcom Family YMCA transitioned our services and facilities to meet vital needs. By providing affordable childcare for essential workers, building virtual health and education programs, and collaborating with partners to support emergency services, we continued to be here when our community needed us most.



The YMCA delivered

**4,984**

boxes of food throughout Whatcom County to those in need.



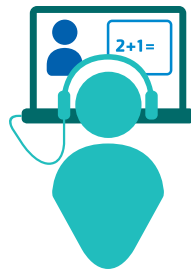
We established our Diversity, Equity, and Inclusion Committee which seeks ways for us to better serve our **WHOLE COMMUNITY.**



With safety measures in place,

**779 Kids**

continued to explore the outdoors, get exercise and have fun in Girls on the Run, Trail Blazers and Trail Snails Hiking Club.



The Y provided childcare for

**249**

**Families**

and assisted with the online learning environment.

Our emergency and essential worker childcare helped over

**200**

**families**



so they could continue to serve our community.



In collaboration with NSACH, the YMCA delivered over

**500,000 Masks**

Seniors countywide logged into virtual fitness programs over



**15,000 times.**

This helped them maintain health and connections with each other, safely from home.

In 2020, the YMCA served **13,945** people in Whatcom County.